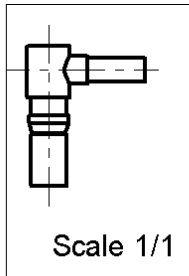
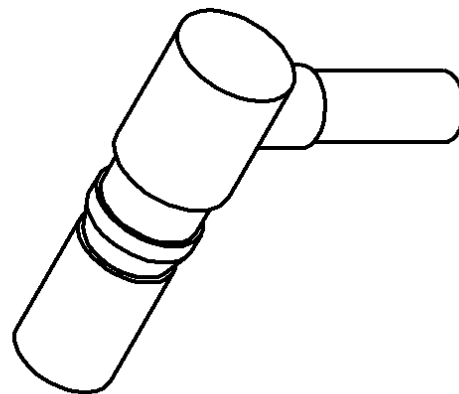
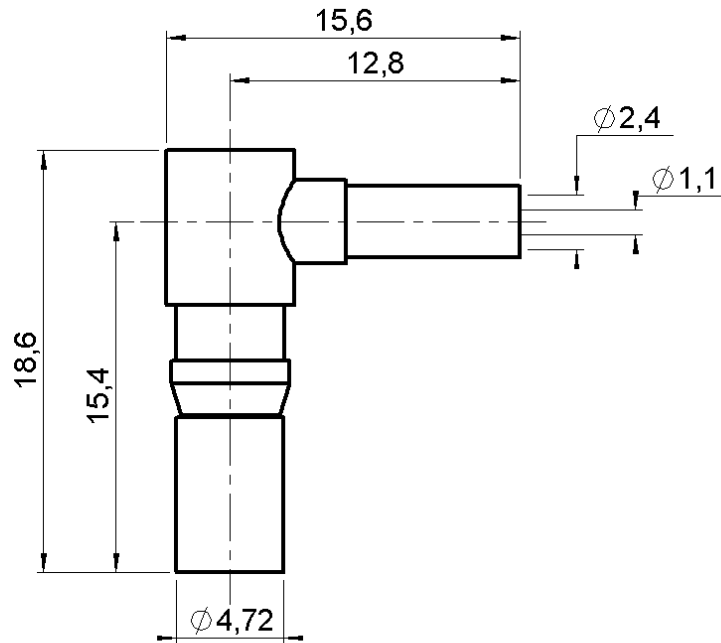


CLIP-ON RIGHT ANGLE PLUG CRIMP TYPE

R120.173.510

CABLE 2/50 S

Series : DIN 41626



All dimensions are in mm.



| COMPONENTS | MATERIALS | PLATINGS (µm) |
|----------------|------------------|---------------|
| BODY | BRASS | GOLD . |
| CENTER CONTACT | BRASS | GOLD . |
| OUTER CONTACT | BERYLLIUM COPPER | GOLD . |
| INSULATOR | PTFE | |
| GASKET | - | - |
| OTHERS PARTS | - | - |
| - | - | - |
| - | - | - |

Issue : 0049 B

In the effort to improve our products, we reserve the right to make changes judged to be necessary.



CLIP-ON RIGHT ANGLE PLUG CRIMP TYPE

R120.173.510

CABLE 2/50 S

Series : **DIN 41626**

PACKAGING

| Standard | Unit | Other |
|------------|-------------------|-------------------|
| 100 | 'W' option | Contact us |

SPECIFICATION

ELECTRICAL CHARACTERISTICS

| | | |
|---------------------------------|---------------|-----------------------------|
| Impedance | | 50 Ω |
| Frequency | | 0-2 GHz |
| VSWR | 1.35 + | 0.000 x F(GHz) Maxi |
| Insertion loss | | NA √F(GHz) dB Maxi |
| RF leakage | - (| NA - F(GHz)) dB Maxi |
| Voltage rating | | 250 Veff Maxi |
| Dielectric withstanding voltage | | 750 Veff mini |
| Insulation resistance | | 5000 MΩ mini |

CABLE ASSEMBLY

| Stripping | a | b | c | d | e | f |
|-----------|------|------|------|------|------|------|
| mm | 1.00 | 7.00 | 12.0 | 0.00 | 11.0 | 0.00 |

Assembly instruction :

Recommended cable(s)
 RG 178
 RG 196
 RG 178 LC
 KX 21

MECHANICAL CHARACTERISTICS

| | | |
|----------------------------|-----------|-----------|
| Center contact retention | | |
| Axial force – Mating end | 10 | N mini |
| Axial force – Opposite end | 10 | N mini |
| Torque | NA | N.cm mini |

Cable retention

| | | |
|------------|-----------|--------|
| - pull off | 40 | N mini |
| - torque | NA | N.cm |

TOOLING

| Part Number | Description | Hexagon |
|--------------|---------------|---------|
| . | . | . |
| R282.211.000 | CRIMPING TOOL | 2.67 |
| R282.235.003 | CRIMPING DIES | 2.67 |
| R282.293.000 | CRIMPING TOOL | - |

| | | |
|--------------------|--------------|------|
| Recommended torque | | |
| Mating | NA | N.cm |
| Panel nut | NA | N.cm |
| Clamp nut | NA | N.cm |
| A/F clamp nut | 0.000 | mm |

OTHERS CHARACTERISTICS

| | | |
|-------------|--------------|-------------|
| Mating life | 500 | Cycles mini |
| Weight | 2.240 | g |

ENVIRONMENTAL

| | | |
|-----------------------|-----------------|-----------|
| Operating temperature | -55/+155 | ° C |
| Hermetic seal | NA | Atm.cm3/s |
| Panel leakage | NA | |

Issue : **0049 B**

In the effort to improve our products, we reserve the right to make changes judged to be necessary.



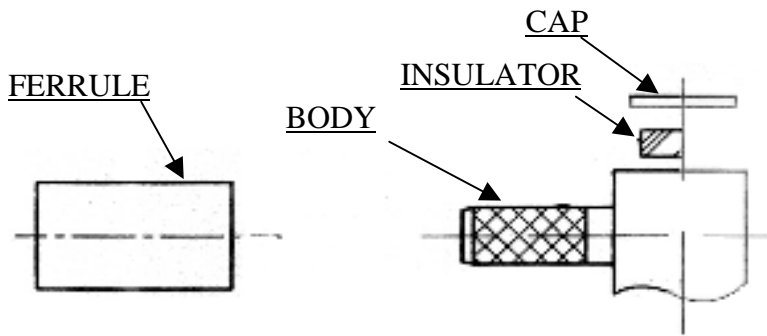
CLIP-ON RIGHT ANGLE PLUG CRIMP TYPE

R120.173.510

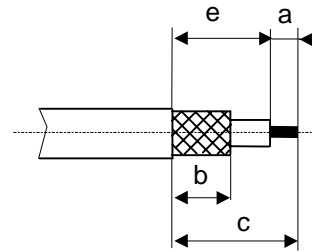
CABLE 2/50 S

Series : DIN 41626

COMPONENTS



STRIPPING DIMENSIONS



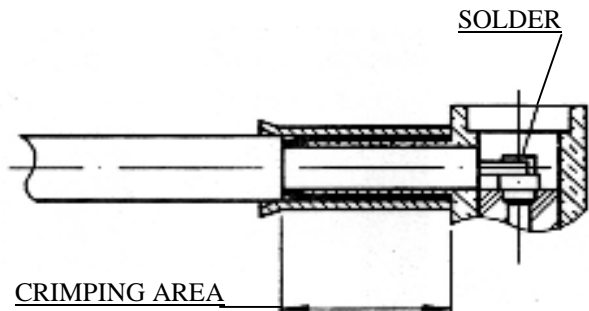
1

- Slide the ferrule onto the cable.
- Strip the cable .



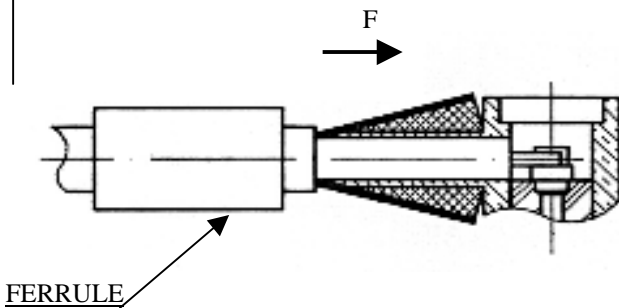
3

- Crimp the ferrule with crimping tool .
- Solder inner conductor.



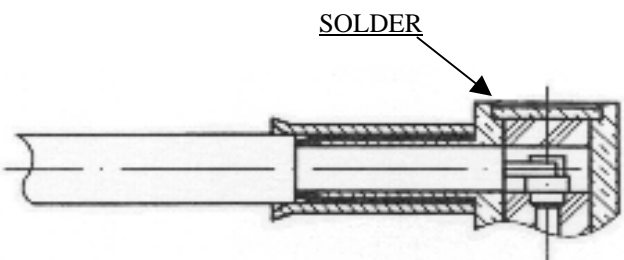
2

- Fan the braid.
- Push connector body under the braid.
- Slide the ferrule on the braid (in direction F)



4

- Place insulator into body.
- Place and solder the cap.



Issue : 0049 B

In the effort to improve our products, we reserve the right to make changes judged to be necessary.

